

DIFFICOLTÀ:

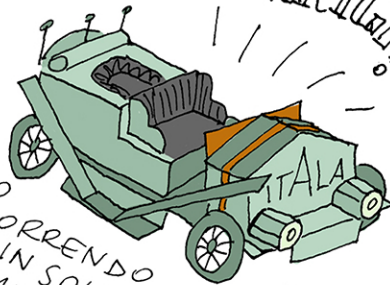


QUESTI SONO DUE PARAFANGHI
CHE POTEVANO ESSERE TOLTI
E USATI COME RAMPE SE SI
INCONTRAVANO DEGLI OSTACOLI



ECCO A VOI LA MITICA
ITALIA PECHINO -PARIGI!

PARTECIPÒ
AL RAID
AUTOMOBILISTICO
DEL 1907 PERCORRENDO
BEN 16.000 KM IN SOLI 60 GIORNI
INSIDIE E MILLE
OSTACOLI



L'EQUIPAGGIO:



IL PRINCIPE
SCIPIONE
BORGHESI



LO CHAFFEUR
ETTORE
GUIZZARDI

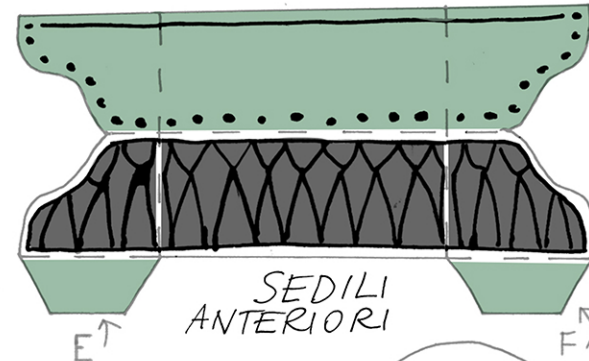
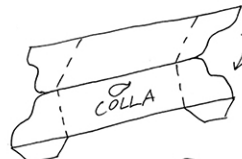


L'INVIATO
SPECIALE
DEL "CORRIERE
DELLA SERA"
LUIGI BARZINI



INCOLLA
LE 4
RUOTE

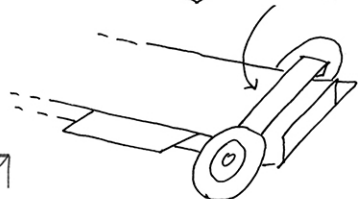
ASSE DELLE RUOTE



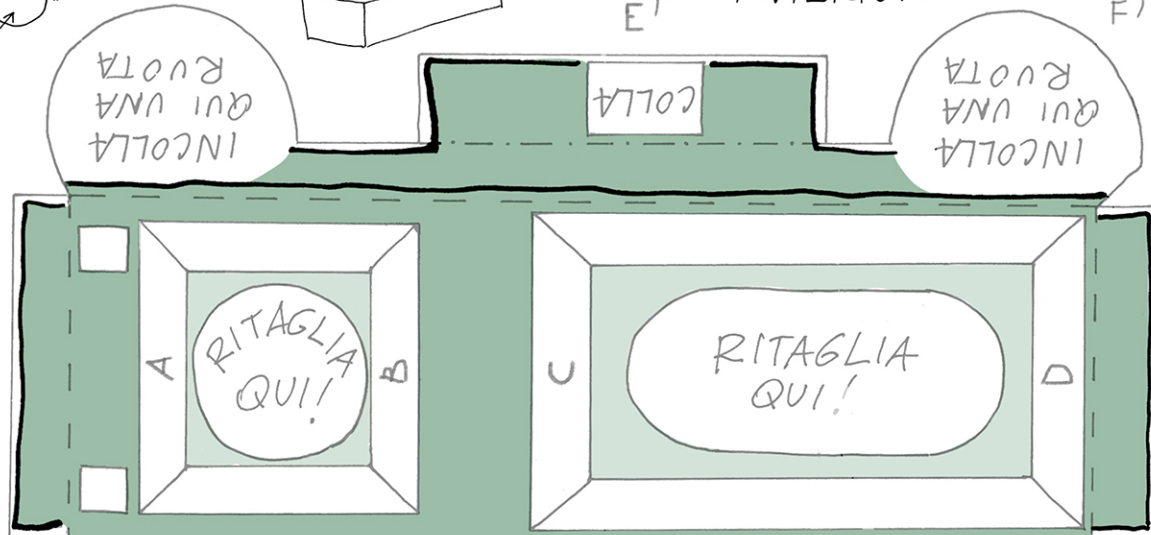
INCOLLA
QUI UNA
RUOTA

COLLA

INCOLLA
QUI UNA
RUOTA



INCOLLA I DUE
PARAFANGHI
SUI SEGNI!

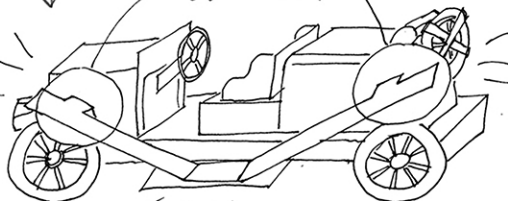


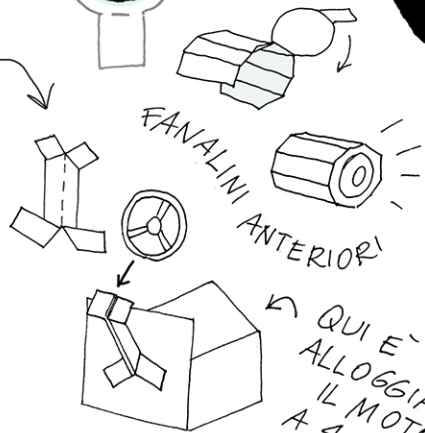
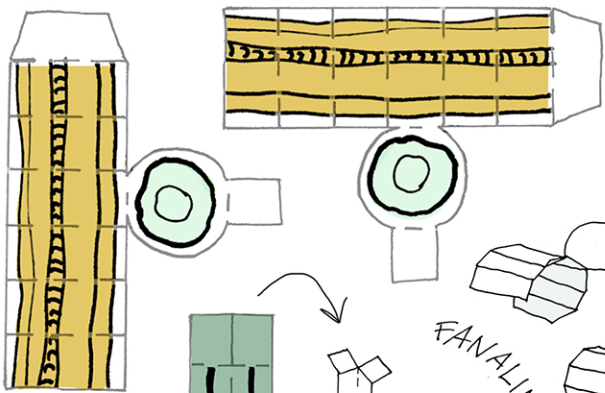
INCOLLA
QUI UNA
RUOTA

COLLA

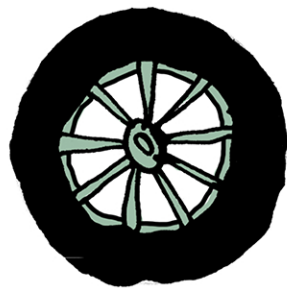
INCOLLA
QUI UNA
RUOTA

GRANDE RAID



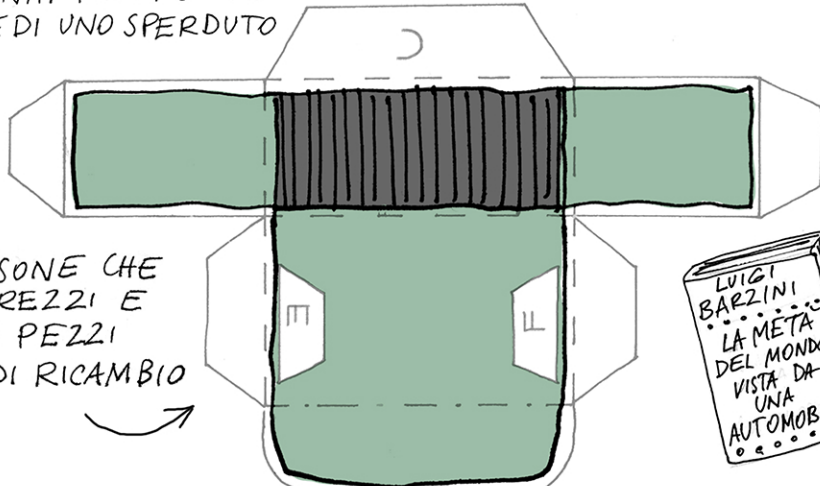
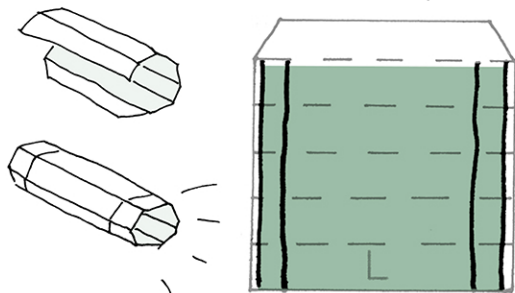


FANALINI ANTERIORI

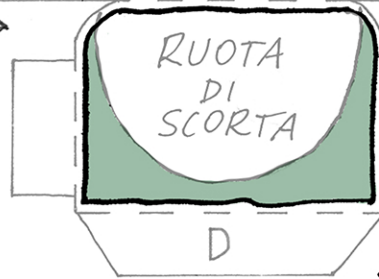
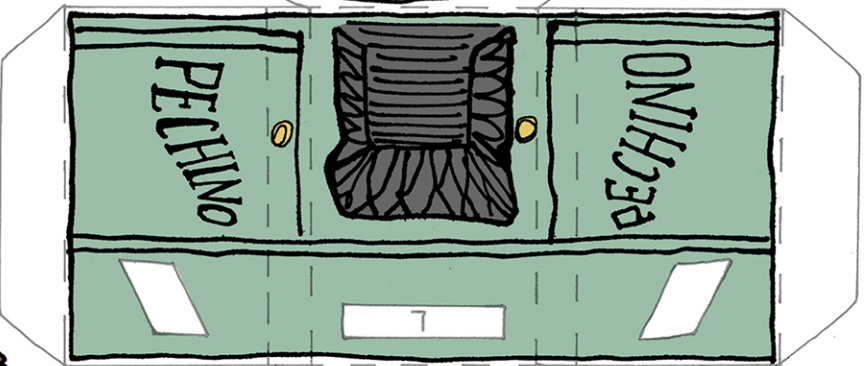
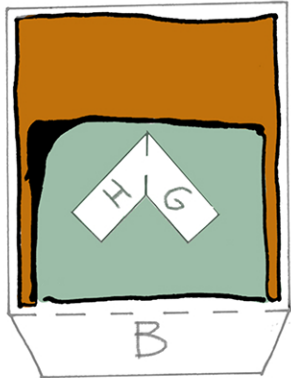
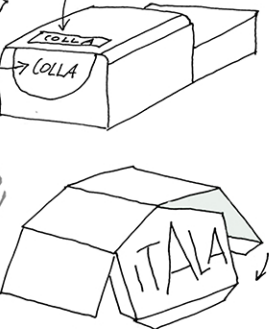
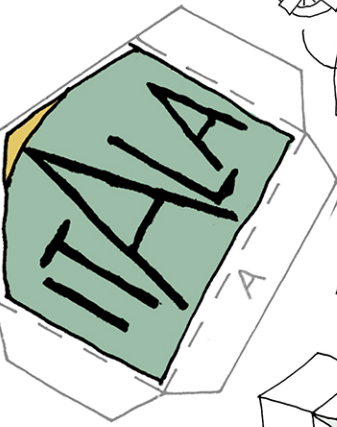
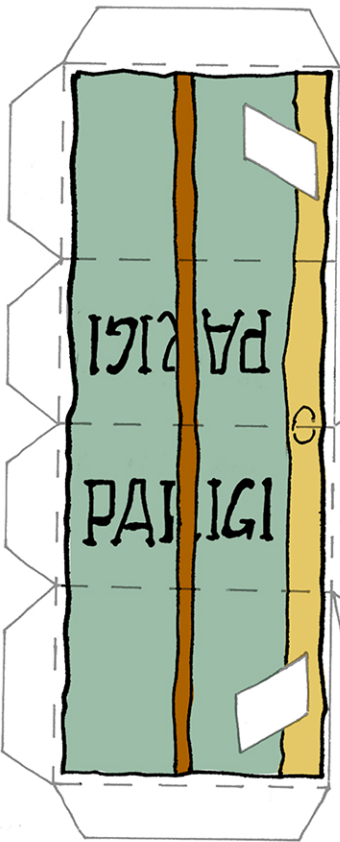


DELLE 4 RUOTE IN LEGNO SE NE RUPPE SOLO UNA. PER FORTUNA UN FALEGNAMEDI UNO SPERDUTO VILLAGGIO SIBERIANO VENNE IN LORO SOCCORSO!

SERBATOIO 2



QUESTO ERA UN CASSONE CHE CONTENEVA GLI ATTREZZI E I PEZZI DI RICAMBIO



UN PROGETTO DI ISADORA BUCCIARELLI PER IL MUSEO NAZIONALE DELL'AUTOMOBILE