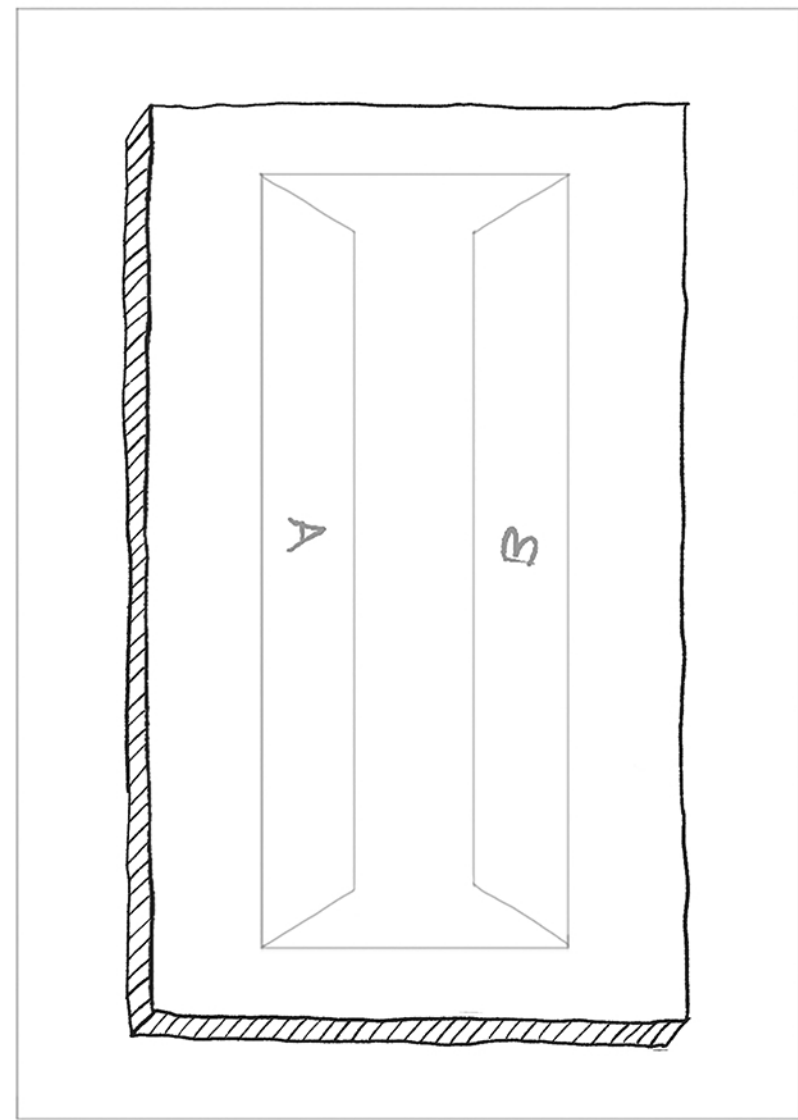
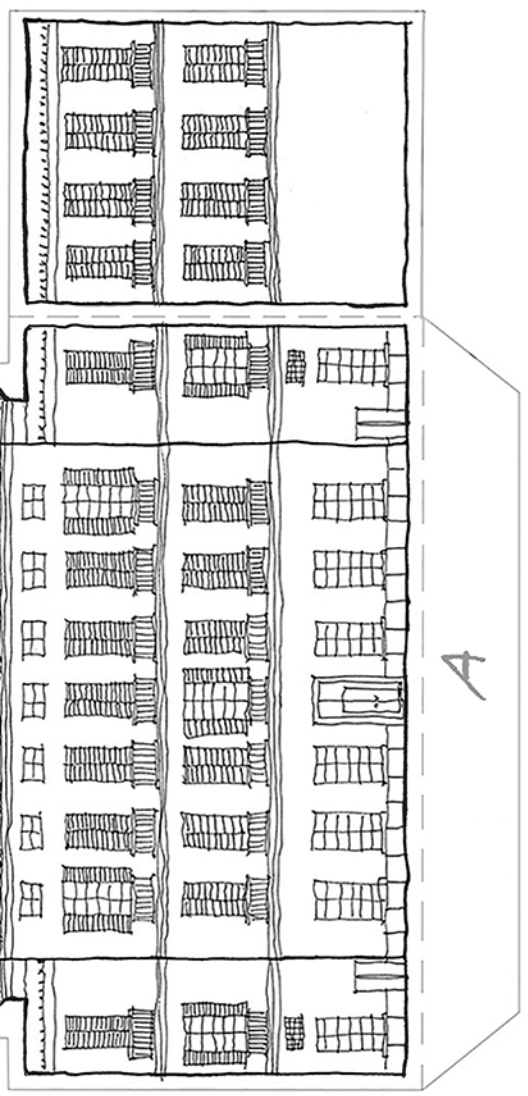
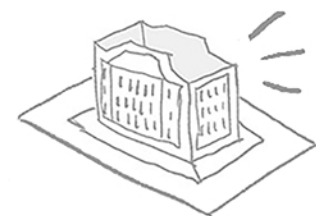
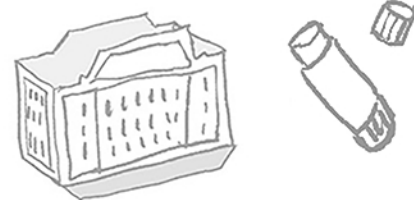
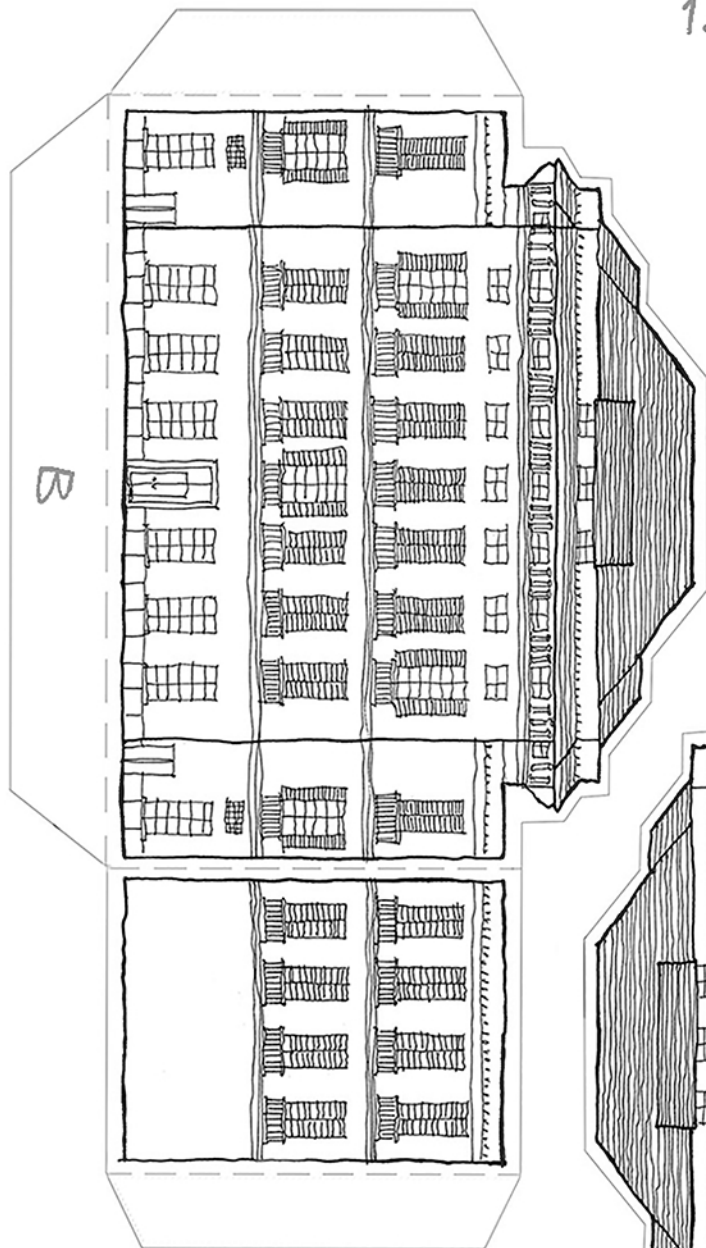


1. PER PRIMA COSA RITAGLIA
LE DUE PARTI DEL PALAZZO:

2. ADESSO COSTRUISCILO, INCOLLANDO
LE DUE LINGUETTE:

3. INFINE INCOLLA IL PALAZZO
SULLA BASE:



TI BASTANO UN PAIO DI FORBICI
E UNA COLLA STICK!

TAGLIA ↗

PIEGA ↗

BASE DEL PALAZZO ↗